

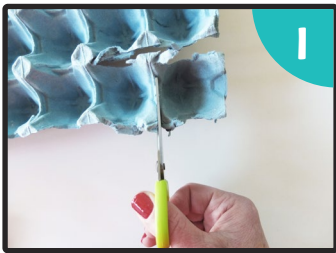
Egg Carton Flowers

You will need:

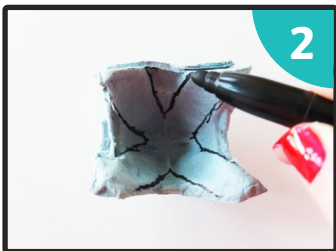
- an egg carton
- poster paints or felt tips
- white glue
- glue spreader
- a plate for the glue
- scissors
- pen or pencil
- buttons, coloured paper, scrap of material, beads, small pom-poms, or sweet wrappers



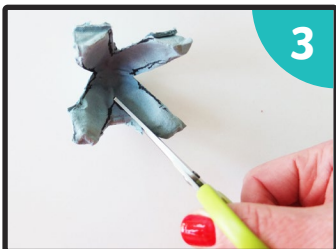
What To Do:



Using scissors, carefully cut the egg carton into individual egg cases.



With a pen or pencil, draw four evenly spaced, large V shapes on the inside of each egg case.



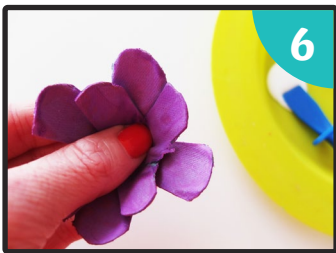
Carefully cut out the V shape from each egg case.



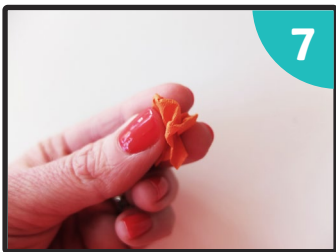
Using scissors, carefully cut the points into a rounded shape. Each point should be a petal.



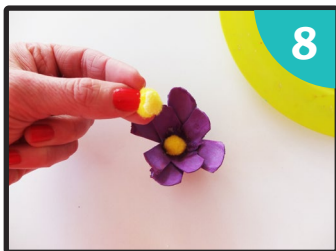
Using poster paints, paint the egg cases all over. If you don't have paints, you can colour them using felt tips.



When the paint is dry, use the glue to stick two egg cases together. Take care to position them so that the petals are not lined up in front of one another.



Now, make your pollen for the inside of your flower. This can be made using buttons or pom-poms or by scrunching up small pieces of material, paper or sweet wrappers.



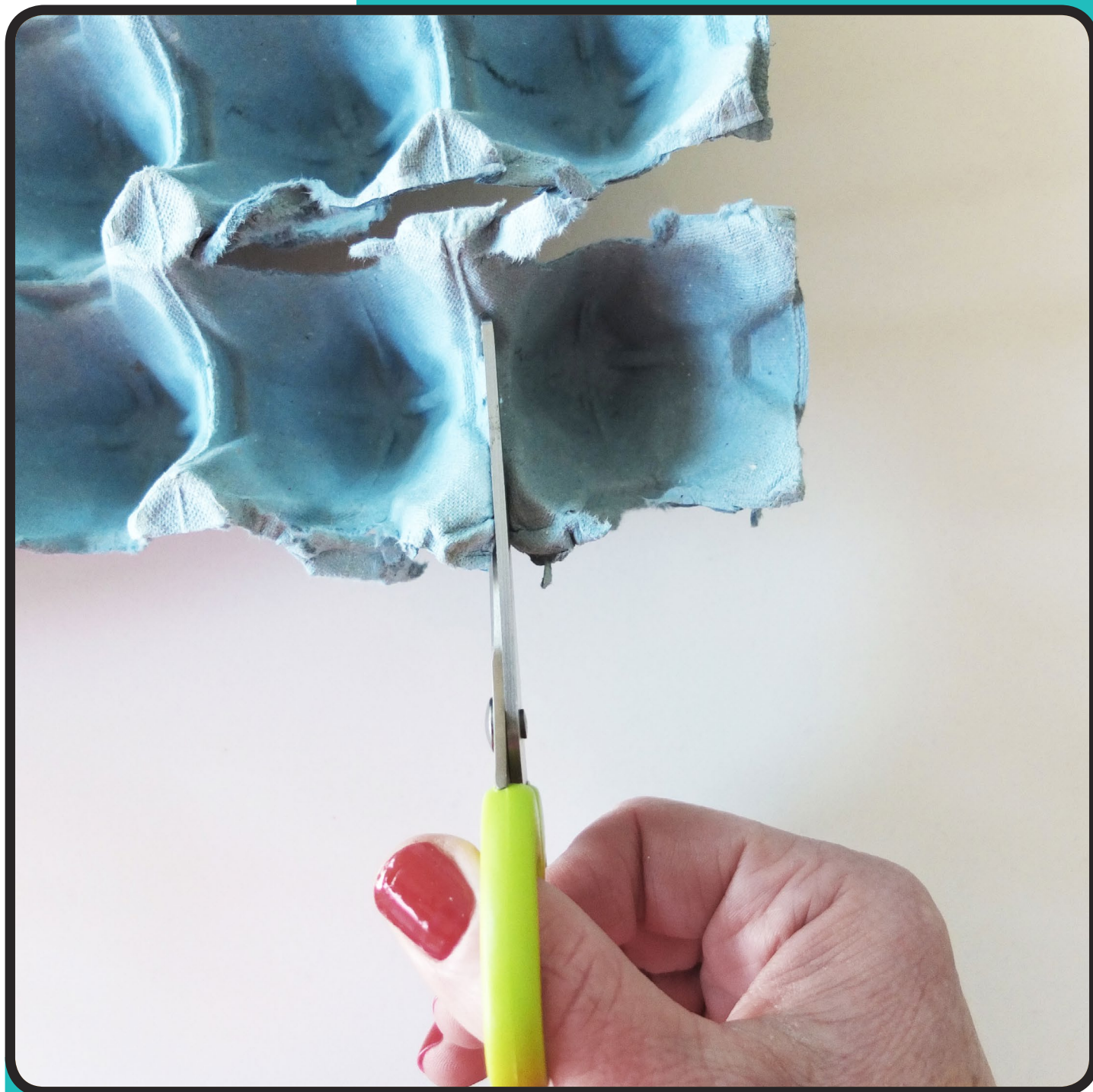
Finally, glue your pollen to the inside of the egg case.

Egg Carton Flowers

You will need:

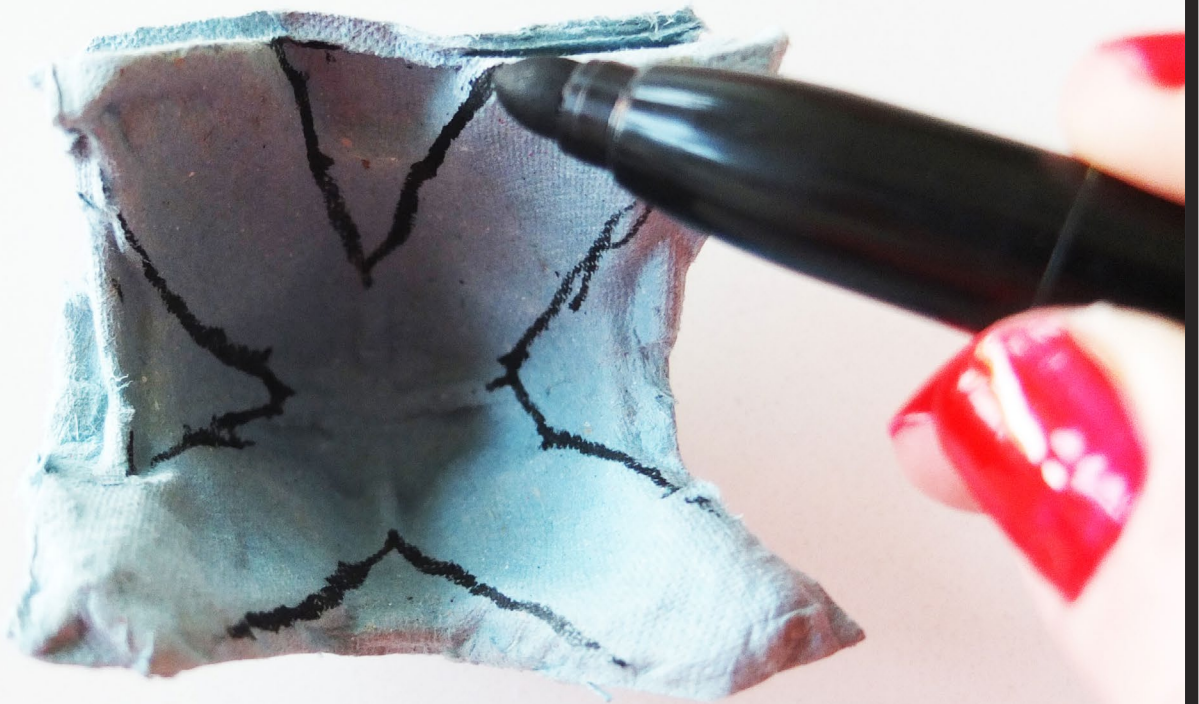
- an egg carton
- poster paints or felt tips
- white glue
- glue spreader
- a plate for the glue
- scissors
- pen or pencil
- buttons, coloured paper, scrap of material, beads, small pom-poms, or sweet wrappers





Step 1

Using scissors, carefully cut the egg carton into individual egg cases.



Step 2

With a pen or pencil, draw four evenly spaced, large V shapes on the inside of each egg case.



Step 3

Carefully cut out the V shape from each egg case.



Step 4

Using scissors, carefully cut the points into a rounded shape. Each point should be a petal.



Step 5

Using poster paints, paint the egg cases all over. If you don't have paints, you can colour them using felt tips.



Step 6

When the paint is dry, use the glue to stick two egg cases together. Take care to position them so that the petals are not lined up in front of one another.



Step 7

Now, make your pollen for the inside of your flower. This can be made using buttons or pom-poms or by scrunching up small pieces of material, paper or sweet wrappers.



Step 8

Finally, glue your pollen to the inside of the egg case.