

Year 3-Maths Homework - Orange and red groups

16/3/20

Timely practice

Draw times on the digital clocks to match the analogue clocks:

1



2



3



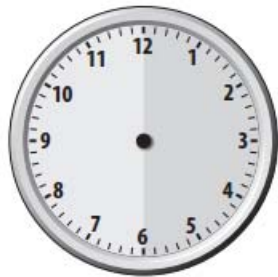
4



Draw a time on each of these two clocks.

Both times must be between half past 2 and quarter to 3.

5



6



20 minutes late

All the morning trains are running 20 minutes late. Draw the time on the station clock when they actually arrive.

The train is due at:

8:20

9:40

10:35

11:25

The train arrives at:

7



8



9



10



Write the time in words when you (remember 'to' and 'past' times):

11 - went to bed last night

12 - read your book to your grown up today

13 - brushed your teeth this morning

14 - arrived home from school any day this week