

Maths Homework

19/11/18

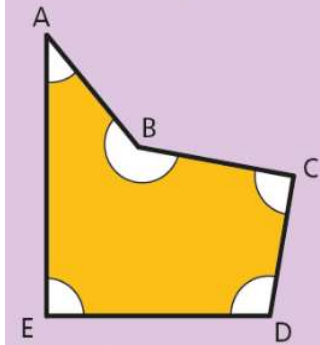
Always, sometimes, never

Write always, sometimes or never by each statement.

- 1 A right angle is 90° . _____
- 2 An acute angle is between 100° and 150° . _____
- 3 A reflex angle is between 300° and 360° . _____
- 4 An obtuse angle is between 90° and 180° . _____
- 5 The radius of a circle is double the diameter. _____
- 6 The circumference of a circle is greater than the radius. _____

7)

Have you mastered angles?



- a) Describe angles A, B, C, D and E. Use words such as right angle, reflex, obtuse and acute.

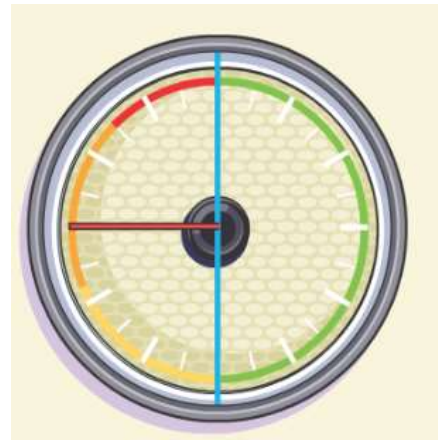
One angle in this shape measures 40 degrees and another measures 100 degrees.

- b) Which angle do you think is 100 degrees?
c) Which angle do you think is 40 degrees?

8) Cut out the circle and stick it in your book.

Label the circle using

1. Circumference
2. Radius
3. Diameter



9) If the radius measure 15 cm what would the diameter measure?

10) If the diameter measured 24 cm what would the radius measure?