

# Academy Newsletter



## Stars<sup>★</sup>

On Friday 15<sup>th</sup> December, the last day of term, Stars will be finishing at 4.30pm.

### Academy Attendance:

EYFS – 94.8%

Year 1 – 95.3%

Year 2 – 95.7%

Year 3 – 98.1%

Year 4 – 92.8%

Year 5 – 88.1%

Year 6 – 96.0%

Overall Academy Attendance – 94.4%

Improvement needed

## Open Mornings

On Tuesday 7<sup>th</sup> November and Tuesday 21<sup>st</sup> November at 9.30am the Academy will be holding Open Mornings for new Early Years (2018/2019) parents to look around.

Supplementary Information Forms (SIF) are available from reception and will be needed for any new children/siblings wishing to attend from next September.

## Academy Dinners

Please ensure all dinners are paid for in advance.

For any outstanding dinners monies please see Mrs Holmes in the office as we try to make sure no child goes without a meal.

## Reminders

All Parents/Carers are welcome to **Liturgies**

**Wednesday 8<sup>th</sup> November**

Year 2 Liturgy ‘

**Wednesday 15<sup>th</sup> November**

Year 1 Liturgy

**Wednesday 22<sup>nd</sup> November**

Year 6 Liturgy

All Parents/Carers are welcome to **Assemblies**

**Thursday 9<sup>th</sup> November**

Year 5 Assembly

**Thursday 16<sup>th</sup> November**

Year 3 Assembly

## Other Important Dates

**Friday 10<sup>th</sup> November**

PTA Movie Night

**Thursday 16<sup>th</sup> November**

Year 4 Church Visit

**Friday 17<sup>th</sup> November**

Children in Need (Spotacular)

**Friday 8<sup>th</sup> December, Mass 11am –**

All Welcome

Friday 17<sup>th</sup> November is Children in Need. This year's theme for fund raising is 'SPOTACULAR'. Pupils are invited to come to the Academy in their own clothes for a donation of £1.00 each. They are invited to wear Spots, these can be on clothes, face painted, in hair or whatever imaginative idea they come up with.



## Message from Our Lady of the Crays, Parish Church re Primary School Admissions

In line with the deadline for Bromley Primary School Admissions, which is Monday 15th January 2018, we will not be accepting primary school supplementary information forms (SIF) until the week of 8th January 2018. SIFs can be accepted by the schools up until the end of January so please bring this form, along with your Mass Attendance Record to one of our Thursday parish surgery sessions after this date. Both of these forms will be kept by Fr. Cyriacus and sent to the schools direct.

The Academy Office is selling Poppies to support The Royal British Legion. As well as Poppies the Academy has the following items for sale with a suggested donation Price.

Wristband's 50p Reflector 50p

Friendship Bracelet £1.00 Snap Band £1.00

Please note that these items cannot be worn in school.



## Lost Property

Please can I ask all parents/carers to carefully look through their child's items of clothing and check that they have not accidentally picked up another child's property. This can be easily done as of course most items are identical. We encourage you all to continue to be vigilant and if there is anything at home that does not belong to your child to return it to the Academy Office or Class Teacher. Thank you for your continued support.

Congratulations to the Onyx Emeralds Baton Twirling Team. They achieved fantastic results at the National Championships 2017 that took place in Paignton, Devon.

**Brodi Supple** has been **selected to represent England** in Norway next Easter in Super X-Strut. **Jessica Adnett** and **Abigail Rowe** placed 2<sup>nd</sup> in Deut. **Na'imah Hudson** was awarded 1<sup>st</sup> and National Champion in Fancy Strut

The Onyx Emeralds Dance Team came 2<sup>nd</sup>.



## Mrs Rodney's Weekly Challenge

### Maths Challenge

Peter runs in a charity event;  
He is doing a 6km run. He  
Stops every 2500m for a drink  
of water. How many stops does  
he make in total?



### Movie Night

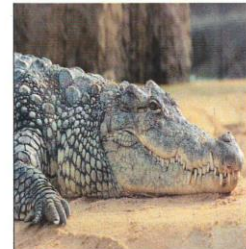
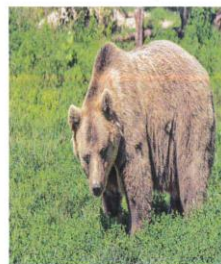
£4.00 each  
Friday 10<sup>th</sup> November  
3.30pm – 5.30pm  
Come join us for a few laughs with  
**Boss Baby**

### Science Challenge

#### Weekly Science Challenge

Which one is the odd one out?

Why is it the odd one out?



**All challenges are to be completed by Wednesday and will be checked on  
Thursday**