

# Academy Newsletter

Friday 23<sup>rd</sup> February 2024  
Spring Term  
Issue: 7



It has been another busy week at school.

On Tuesday, Year 5 had a school trip to Pizza Express. They all made their own pizza and then got to eat it for their lunch! The rest of the school were very jealous of their pizza lunch.

On Thursday, Year 2 attended this year's BrightSparks concert at the Royal Festival Hall. This year, they heard about Stan and Mabel who went on a journey to join the best orchestra in the world. The story was accompanied by the London Philharmonic Orchestra. The children loved the experience singing along with great gusto.

Just a reminder about the purple collection boxes we have given out for Lent. These are not due back until we break up for Easter, so you can keep adding any small change you might get over this special time. All money raised will go to the Catholic Children's Society, which is a charity that has helped some of our families.

Thank you to all parents/carers who filled out the questionnaire or spoke with inspectors regarding our Catholic School Inspection.

Have a lovely weekend.



## Holiday Requests

**Holidays in school time may be less expensive.... but your child's education is priceless!**



No term time holiday/long weekend/day trips will be authorised (unless exceptional circumstances).

Please send an email to [admin@stpstp.co.uk](mailto:admin@stpstp.co.uk) if you intend on removing your child from education for one of the circumstances set above.

Requests can take up to two weeks for a response.

## Lateness

If you are running late to collect your child from school, please go straight to Stars.

Stars will allow you a grace period of 10 minutes. After 10 minutes you will be charged at the rate of a twilight session.

The 10 minutes commences from the moment they finish school up until the child is collected from Stars (not the office or school premises).

Going forward, parents will be asked to sign their child out of Stars so that there is no discrepancy on collection times.

We appreciate there has been confusion in the past however this is our procedure as per our terms and conditions.

# HAPPY BIRTHDAY!

Patsie – Year 1

Pippa – Year 4

Poppy – Year 4



## Attendance

EYFS	95.4
Year 1	91.6
Year 2	96.0
Year 3	96.3
Year 4	94.3
Year 5	97.1
Year 6	93.3
Whole School	95.94

The winning class this week was **Year 5** gaining two stars for achieving highest attendance. Unfortunately, no other class achieved greater than 97%

How many children were late for school this week?



## MISS SCHOOL MISS OUT MAKE EVERY SCHOOL DAY COUNT!

## VIRTUES AWARD – VIRTUES TO LIVE BY

Self-Control



*"But the Spirit produces love, joy, peace, patience, kindness, goodness, faithfulness, humility, and self-control."* Galatians 5:22-

23

EYFS	Isaiah
Year 1	Thomas
Year 2	Mayah
Year 3	Cass
Year 4	Penelope
Year 5	Cove
Year 6	Ekua

## Nursery Star of the Week



# Fife





### Year 5 School Trip





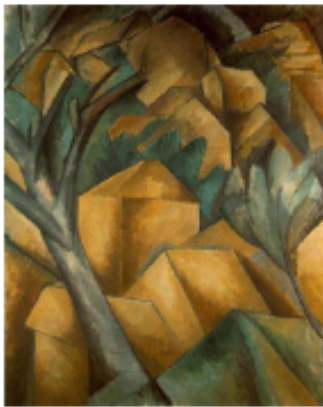
### Year 2 School Trip



# Cubist inspired

## FEBRUARY'S ART CHALLENGE

Cubism is a style of art that was invented in 1907. Cubist artists try to break an object or person up into different parts. This often makes the painting look like they are made up of geometric shapes like cubes. Pablo Picasso was one of the first artists to explore Cubism. He was born in Spain but later moved to Paris, France. He wanted to paint things that he felt, remembered and saw all in one painting.



Pablo Picasso worked closely with a French artist called Georges Braque. In 1908, Braque painted one of the first Cubist landscapes.

It was called 'Houses of L'Estaque'.

An art critic who saw the painting said that it looked like it was made of cubes. This style of painting then became known as cubism.

Decide on some warm colours to use to complete each section of the heart and cold colours for the background.

Your challenge is to create a piece of artwork that is inspired by Cubism.

### Equipment:

- heart template of your choice
- black marker or pen
- ruler
- pencil
- watercolour or acrylic paints
- cup of water
- paintbrush
- black paper or card for mounting your artwork



Hand in your creation to **Mrs Lee** by **Monday 26th February** for a chance to win an amazing arts and crafts prize!

Look out for the new monthly art competition in the newsletter at the beginning of every month.





### Price and Buckland

Unfortunately Price and Buckland have had to increase the cost in our school uniform. Over the past 12 months inflation rates and interest rates have risen to levels not seen for quite some time. Whilst both are beginning to come down, salary rises (including the increase in the minimum wage), have meant our costs have increased overall.

As a result, they had no choice but to increase some prices, many are staying the same such as the old style 2011 Polo Shirt. Also some are only going up just 50p such as the sweatshirts and cardigans. None of the regular garments shown on the website will be going up in price by more than 50p or 5%.

For our online customers, the delivery charge remains unchanged and we continue to offer **FREE** returns, **FREE** delivery to school\*, and **FREE** delivery on orders over a certain value.

### Meeting with the SENDCO (Mr O'Dwyer)

Please scan the QR code below should you wish to meet with Mr Odwyer. You may want to discuss an ongoing concern, or discuss a new concern all together.



### PTA Readathon

Thank you to all of those that have returned their sponsor forms. The PTA are still accepting forms back so if you have any extra sponsors you would like to try and get or set yourself anymore challenges please feel free!

Have fun reading!



**Term Dates**  
**Academic Year 2024-2025**



<b>Autumn Term 2024</b>	
Tuesday 27 <sup>th</sup> August	INSET (non-pupil day)
Wednesday 28 <sup>th</sup> August	INSET (non-pupil day)
Thursday 29 <sup>th</sup> August	First day of term (pupils return)
Friday 18 <sup>th</sup> October	Last day of half term
Monday 21 <sup>st</sup> - Friday 1 <sup>st</sup> November	Half Term Break
Monday 4 <sup>th</sup> November	First day of half term (pupils return)
Friday 20 <sup>th</sup> December	Last day of term (school closes at 2pm)*
<b>Spring Term 2025</b>	
Monday 6 <sup>th</sup> January	First day of term (pupils return)
Friday 14 <sup>th</sup> February	Last day of half term
Monday 17 <sup>th</sup> - Friday 21 <sup>st</sup> February	Half Term Break
Monday 24 <sup>th</sup> February	First day of half term (pupils return)
Friday 4 <sup>th</sup> April	Last day of term (school closes at 2pm)*
<b>Summer Term 2025</b>	
Tuesday 22 <sup>nd</sup> April	First day of term (pupils return)
Monday 5 <sup>th</sup> May	Bank Holiday – School Closed
Friday 23 <sup>rd</sup> May	Last day of half term
Monday 26 <sup>th</sup> - Friday 30 <sup>th</sup> May	Half Term Break
Monday 2 <sup>nd</sup> June	First day of half term (pupils return)
Friday 18 <sup>th</sup> July	Last day of term (school closes at 2pm)*
Monday 21 <sup>st</sup> July	INSET (non-pupil day)
Tuesday 22 <sup>nd</sup> July	INSET (non-pupil day)
Wednesday 23 <sup>rd</sup> July	INSET (non-pupil day)

INSET 1 – 27<sup>th</sup> August 2024

INSET 2 – 28<sup>th</sup> August 2024

INSET 3 – 21<sup>st</sup> July 2025

INSET 4 – 22<sup>nd</sup> July 2025

INSET 5 – 23<sup>rd</sup> July 2025

\*No twilight/evening stars

## Spring Term

Amendments are highlighted and Cancellations are in red.

Please note the lists of dates below are subject to change and we encourage you to look each week for any changes.

Monday 26 <sup>th</sup> February 2024	Year 1 Library Visit (more information to follow)
Tuesday 27 <sup>th</sup> February 2024	5 year old dental check
Tuesday 27 <sup>th</sup> February 2024	Yr 4 Alternative trip and dress up day - Egyptian day with Mr Egypt.
Wednesday 28 <sup>th</sup> February 2024	Rescheduled – Year 1 London Eye Trip
Thursday 29 <sup>th</sup> February 2024	Year 3 Visit to The British Museum
Wednesday 6 <sup>th</sup> March 2024	Catholic Children's Society Lent Appeal Assembly
Thursday 7 <sup>th</sup> March 2024	World Book Day – dress as a book character
Saturday 9 <sup>th</sup> March 2024	Year 3 and 4 Cross Country – Crystal Palace
Tuesday 12 <sup>th</sup> March 2024	Year 5 and 6 Girls Football Match Biggin Hill Primary
Wednesday 13 <sup>th</sup> March 2024	Holi Assembly - Nabhi
Wednesday 20 <sup>th</sup> March 2024	Year 3 and 4 – Performing Arts Workshop (The Paper Allotment)
Friday 22 <sup>nd</sup> March 2024	Easter Mass – led by Year 3
Monday 25 <sup>th</sup> March 2024	Eggsibition entries in (more information to follow)
Wednesday 27 <sup>th</sup> March 2024	Easter Passion – Year 4 (more information to follow)
Thursday 28 <sup>th</sup> March 2024	School Closes at 2pm – No Twilight or Evening Stars





## SPRING FAMILY WORKSHOP SUNDAYS in the Hever Castle Think Tank

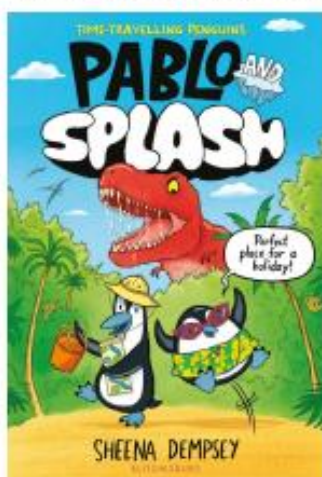
Fabulous childrens authors will be bringing their books to life with fun activities and interesting exclusive facts. With the opportunity to meet rebels and royalty from history, time travelling penguins and big bad wolf scientists these events are perfect for inquisitive children asking big questions! Each author will be available to chat after the workshop and will be signing copies of their books which will be available to buy at the events.



Big Bad Wolf Investigates Fairy Tales  
Fact-checking your favourite stories  
with SCIENCE!  
Catherine Cawthorne  
Sun 28 Apr 2pm



The Time Machine Next Door: Rebellions and Super  
Boots and Rule Breakers and Kiwi Keepers  
Iszi Lawrence Sun 5 May 2pm



Pablo and Splash  
Sheena Dempsey  
Sun 12 May, 2pm



**ALL TICKETS £13.70**

These events are taking place indoors and include the opportunity to visit Hever Castle gardens following the afternoon events. TICKETS ARE LIMITED.

**HEVERFESTIVAL.CO.UK**

**BOXOFFICE@HEVERFESTIVAL.CO.UK**