

Academy Newsletter

Friday 9th February 2024
Spring Term
Issue: 6



Thank you for attending the parent consultations this week, we hope that you were able to find out about the progress your child is making and any areas you can support them in. If you were unable to attend, please make contact with the class teacher via the academy office. We will contact EYFS and Year 1 parents after half term regarding the rescheduling of appointments. We thank you for your patience.

On Monday, the Year 2 children had their turn of picking a reading for pleasure book from Sidcup library and carrying out some activities. Take a look at their books they picked later in the newsletter. Year 3 braved the rain on Thursday to celebrate Mass at Our Lady of the Crays. Fr Cyriacus was very complimentary and thanked the children and adults for making the journey.

This year, Lent begins in half term, with Ash Wednesday falling on Wednesday 14th February. The children have brought home a Walk with Me activity booklet for Lent, which we would love them to complete during the 7 weeks.

Our Lenten charity we are supporting will again be the Catholic Children's society. This year's appeal is inspired by Pope Francis's call for young people to use their voice to make a difference in the world. Every penny raised by our school will support their work with local disadvantaged children and families. Please collect any small change in the purple box during Lent and bring back to school before the Easter break.

Have a wonderful half term!



Holiday Requests

**Holidays in school time may be less expensive....
but your child's education is priceless!**



No term time holiday/long weekend/day trips will be authorised (unless exceptional circumstances)

Please send an email to admin@stpstp.co.uk if you intend on removing your child from education for one of the circumstances set above.



19th February 2023

Clubs will resume this week

Every Minute
COUNTS!



**TOWARD STUDENT
SUCCESS** 

Attendance

| | |
|--------------|------|
| EYFS | 97.9 |
| Year 1 | 92.2 |
| Year 2 | 97.8 |
| Year 3 | 99.0 |
| Year 4 | 96.4 |
| Year 5 | 99.5 |
| Year 6 | 95.6 |
| Whole School | 96.9 |

The winning class this week was **Year 5** gaining two stars for achieving highest attendance. **EYFS, Year 2 and Year 3** all gained one star for achieving over 97%

How many children were late for school this week?

87

**HAPPY
BIRTHDAY!**

Ruby – Year 3
David – Year 5
Makai – Year 5



*half term birthdays will be celebrated after February half-term.

VIRTUES AWARD – VIRTUES TO LIVE BY

Love of Neighbor



You shall love the Lord your God with all your heart and with all your soul and with all your mind. This is the great and first commandment. And a second is: You shall love your neighbour as yourself.” Matthew 22:37-39

| | |
|--------|---------|
| EYFS | Sophie |
| Year 1 | Jamie |
| Year 2 | Arianna |
| Year 3 | Zara |
| Year 4 | Musa |
| Year 5 | Lucy |
| Year 6 | Chayce |

Nursery Star of the Week



Veronika



Year 3 School Trip – Our Lady of the Crays



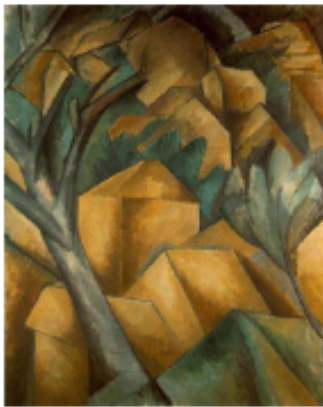
Year 2 – Sidcup Library



Cubist inspired

FEBRUARY'S ART CHALLENGE

Cubism is a style of art that was invented in 1907. Cubist artists try to break an object or person up into different parts. This often makes the painting look like they are made up of geometric shapes like cubes. Pablo Picasso was one of the first artists to explore Cubism. He was born in Spain but later moved to Paris, France. He wanted to paint things that he felt, remembered and saw all in one painting.



Pablo Picasso worked closely with a French artist called Georges Braque. In 1908, Braque painted one of the first Cubist landscapes.

It was called 'Houses of L'Estaque'.

An art critic who saw the painting said that it looked like it was made of cubes. This style of painting then became known as cubism.

Decide on some warm colours to use to complete each section of the heart and cold colours for the background.

Your challenge is to create a piece of artwork that is inspired by Cubism.

Equipment:

- heart template of your choice
- black marker or pen
- ruler
- pencil
- watercolour or acrylic paints
- cup of water
- paintbrush
- black paper or card for mounting your artwork



Hand in your creation to **Mrs Lee** by **Monday 26th February** for a chance to win an amazing arts and crafts prize!

Look out for the new monthly art competition in the newsletter at the beginning of every month.

Lent

Ash Wednesday is one of the most popular and important holy days in the liturgical calendar. Ash Wednesday opens Lent, a season of fasting and prayer.

Ash Wednesday takes place 46 days before Easter Sunday. Priests administer ashes during Mass and all are invited to accept the ashes as a visible symbol of penance. The ashes are made from blessed palm branches, taken from the previous year's palm Sunday Mass.

During Lent, the children have been given an activity booklet to complete and a collection box to help disadvantaged families.



Meeting with the SENDCO (Mr O'Dwyer)

Please scan the QR code below should you wish to meet with Mr Odwyer. You may want to discuss an ongoing concern, or discuss a new concern all together.



Parking

Please park responsibly. This week we have had members of the public complain to us about the lack consideration demonstrated when parking.



Term Dates
Academic Year 2024-2025



| | |
|------------------------------------------------------------|------------------------------------------|
| Autumn Term 2024 | |
| Tuesday 27 th August | INSET (non-pupil day) |
| Wednesday 28 th August | INSET (non-pupil day) |
| Thursday 29 th August | First day of term (pupils return) |
| Friday 18 th October | Last day of half term |
| Monday 21 st - Friday 1 st November | Half Term Break |
| Monday 4 th November | First day of half term (pupils return) |
| Friday 20 th December | Last day of term (school closes at 2pm)* |
| Spring Term 2025 | |
| Monday 6 th January | First day of term (pupils return) |
| Friday 14 th February | Last day of half term |
| Monday 17 th - Friday 21 st February | Half Term Break |
| Monday 24 th February | First day of half term (pupils return) |
| Friday 4 th April | Last day of term (school closes at 2pm)* |
| Summer Term 2025 | |
| Tuesday 22 nd April | First day of term (pupils return) |
| Monday 5 th May | Bank Holiday – School Closed |
| Friday 23 rd May | Last day of half term |
| Monday 26 th - Friday 30 th May | Half Term Break |
| Monday 2 nd June | First day of half term (pupils return) |
| Friday 18 th July | Last day of term (school closes at 2pm)* |
| Monday 21 st July | INSET (non-pupil day) |
| Tuesday 22 nd July | INSET (non-pupil day) |
| Wednesday 23 rd July | INSET (non-pupil day) |

INSET 1 – 27th August 2024

INSET 2 – 28th August 2024

INSET 3 – 21st July 2025

INSET 4 – 22nd July 2025

INSET 5 – 23rd July 2025

*No twilight/evening stars

Spring Term

Amendments are **highlighted** and Cancellations are in **red**.

Please note the lists of dates below are subject to change and we encourage you to look each week for any changes.

| | |
|------------------------------------------------|-----------------------------------------------------------------------------|
| Monday 19 th February 2024 | Back to School |
| Thursday 22 nd February 2024 | Year 2 Bright Sparks Concert |
| Thursday 22nd February 2024 | Piano lessons start |
| Monday 26 th February 2024 | Year 1 Library Visit (more information to follow) |
| Tuesday 27th February 2024 | 5 year old dental check |
| Tuesday 27th February 2024 | Yr 4 Alternative trip and dress up day - Egyptian day with Mr Egypt. |
| Wednesday 28th February 2024 | Rescheduled – Year 1 London Eye Trip |
| Thursday 29 th February 2024 | Year 3 Visit to The British Museum |
| Wednesday 6 th March 2024 | Catholic Children's Society Lent Appeal Assembly |
| Thursday 7 th March 2024 | World Book Day – dress as a book character |
| Saturday 9 th March 2024 | Year 3 and 4 Cross Country – Crystal Palace |
| Tuesday 12 th March 2024 | Year 5 and 6 Girls Football Match Biggin Hill Primary |
| Wednesday 13 th March 2024 | Holi Assembly - Nabhi |
| Wednesday 20th March 2024 | Year 3 and 4 – Performing Arts Workshop (The Paper Allotment) |
| Friday 22 nd March 2024 | Easter Mass – led by Year 3 |
| Monday 25 th March 2024 | Eggsibition entries in (more information to follow) |
| Wednesday 27 th March 2024 | Easter Passion – Year 4 (more information to follow) |
| Thursday 28 th March 2024 | School Closes at 2pm – No Twilight or Evening Stars |



5-12 years

SCHOOL'S OUT

HOLIDAY CAMPS

from **£17**

Scan me to book

February Holiday Camps at Walnuts Leisure Centre!

Monday 12th - Friday 16th February 2024
8.30am - 5.30pm (half day available)

www.mytimeactive.co.uk/camps **mytimeactive**



VALENTINE TRAIL

10th - 18th February

Join our trail to find the pairs of animals

Pick up your entry form at reception.
Find the 10 pairs of animals.
Collect your prize from the Tea Room

Open daily (except Tuesday)
from 1.30pm - 4.30pm

FOAL FARM
Animal Rescue

£3 per entry

Foal Farm Animal Rescue
Jail Lane, Biggin Hill, TN16 3AX
www.foalfarm.org.uk